

MATRIX | *Enlightened* EXPERIENCE



## *A unique* EXPERIENCE

*Your brand and your business are unique. Your relationship with Matrix will be too, because we'll work with you to create an exercise experience that reflects you and what you do perfectly. From complete fitness centers to in-room solutions, we'll help you combine the world's finest equipment, the latest trends and connected technology to maximize your resources and delight your guests like never before.*





## *A committed* EXPERIENCE

*Whether you run a sprawling resort or a boutique hotel, you'll get more than just the finest fitness equipment in the world from Matrix. Partner with us, and we'll work with you every step of the way, from selecting the ideal equipment and planning the space, to the installation and beyond. We'll always be available to you with industry-leading customer support and complete business solutions that can redefine your fitness center in amazing ways.*



#### FACILITY PLANNING

Your space. Your goals. Your budget. We'll help bring your fitness center to life from your earliest imaginings to the first plug-in.

#### CERTIFIED INSTALLATION/SERVICE SUPPORT

Maximize uptime. Optimize your investment. We provide all the tools you to get up and running and stay that way.

#### INDUSTRY-LEADING WARRANTIES

Our promise of quality to you. We offer all the protection you need to choose confidently — and know that you've chosen wisely.

#### FINANCING/LEASING\*

We make it easy for you to decide what you buy and how you pay. With a full spectrum of competitive and tailored financing options, we're sure to have a plan just right for you.

\*Availability varies per market.

#### UNMATCHED CUSTOMER SUPPORT

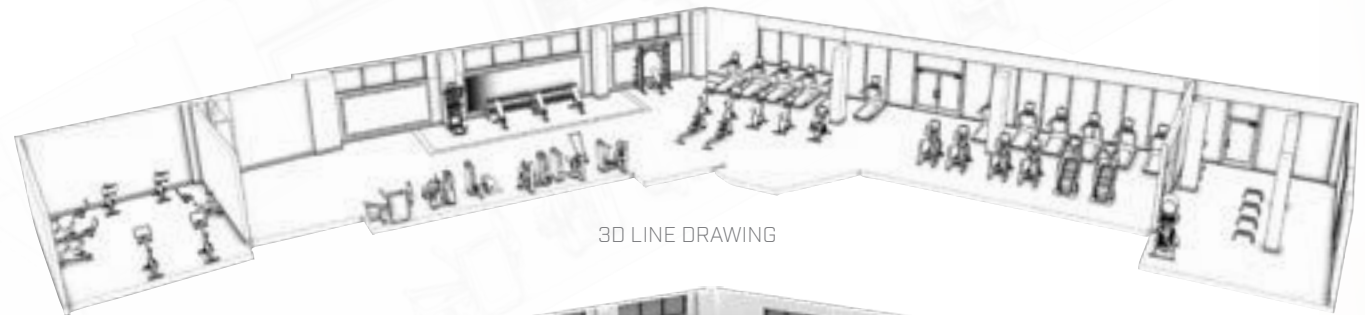
A 90% first-time fix rate. A 48-hour service response time. And with our amazing console technology, we can provide diagnostic services remotely or onsite.

#### MATRIX LEARNING

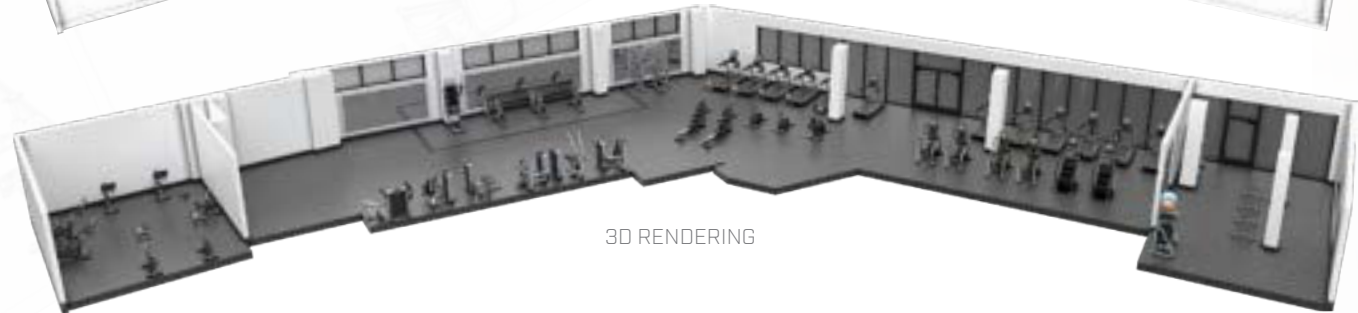
Product training. Maintenance tips. On-demand educational videos. A whole new world of service and support. It's all at your fingertips with Matrix Learning at [matrixlearningcenter.com](https://matrixlearningcenter.com).

## *A visionary* EXPERIENCE

*Choose our talented facility planning team to make your ideal fitness center a reality. We'll work with you by helping you select the perfect mix of equipment for your space, goals and budget. We can even help you visualize the possibilities with our cutting-edge 2D and 3D design resources. Additionally, we offer an Online Architects Portal specifically for architects and designers who have their own space planning software. Count on our ingenious design resources to help bring your dream to life without compromise.*



3D LINE DRAWING



3D RENDERING



3D PHOTOGRAPHIC RENDERING



## *A connected* EXPERIENCE

*You want to deliver a fitness experience your guests will never forget, and Matrix Connected Solutions gives you the flexibility to do it your way, regardless of the size of your establishment or budget. With the power of our robust, open platform at your fingertips, service and maintenance become hassle-free, and the guest exercise experience is streamlined and smoother than ever.*

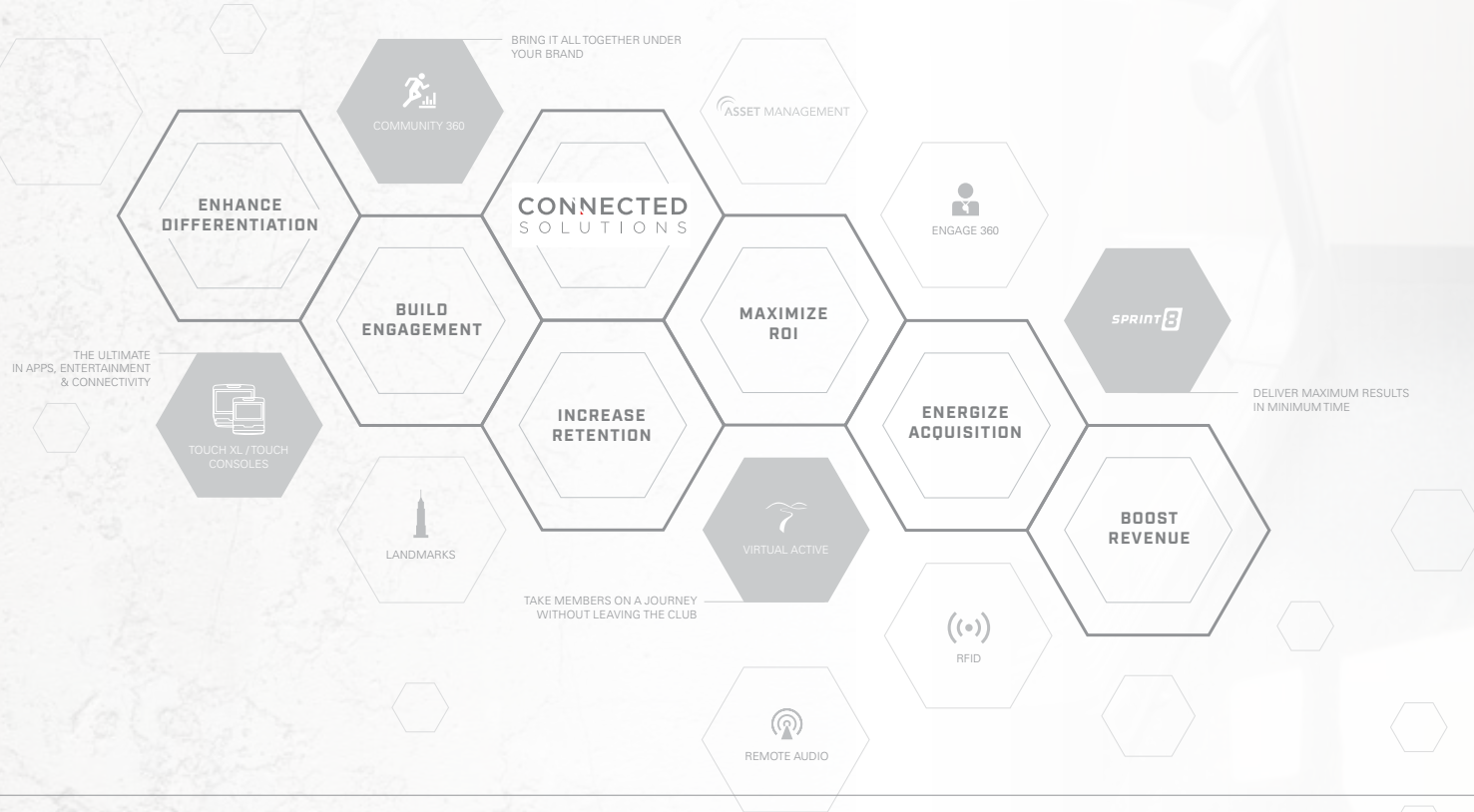
*Each guest who comes through your doors can instantly enjoy their favorite music, entertainment and social networks on connected cardio platforms. You can even use tools like Asset Management and Touch Consoles together to extend your brand within and across properties, promoting events and premium services with branded messaging. And that's just a taste of what Matrix Connected Solutions can do.*

*Discover how our complete selection of hardware and software solutions can help bring your fitness and wellness center to life in bigger, bolder, brighter ways than ever before.*



## ASSET MANAGEMENT

Our industry-leading Asset Management platform offers a 360-degree view of your equipment on virtually any internet-connected device. Easy-to-read color-coding tells you whether a product is functioning properly, detects errors and alerts you if something is offline. You can even create customized reports to help maximize product life and identify the optimum product mix. It also improves communication with Matrix and your service provider, streamlining maintenance and repair while reducing paperwork and hassle. With Asset Management, it's easier than ever to keep your fitness equipment in top condition and your guests happy.





#### IPTV

Hotels can sync their entertainment slates so guests experience the same program lineups on their cardio equipment as they do in their rooms, the lounge and the hotel bar. IPTV creates a seamless entertainment experience for guests and affords properties the most control over their offering.

#### Pro:Idiom

##### PRO:IDIOM COMPATIBILITY

Designed for the hospitality industry, Pro:Idiom encrypts high-definition video signals to protect content providers from piracy. With our Pro:Idiom-compatible console and digital TV options, hotel guests can stop a favorite movie or TV show in their room and pick up right where they left off when they reach your fitness center.



#### RFID

For frequent or long-term guests, RFID is a smart way to streamline their exercise experience. Simple radio-frequency tags make check-in, program loading and workout tracking completely touch-free and virtually automatic. Guests can even use RFID with your existing RFID-compatible vending machines, kiosks and in-building sales centers for quick impulse buys of your branded merchandise, snacks, beverages and more. RFID can make your guests' every interaction easy and smooth, and it can also open new revenue streams for you.



#### DIGITAL TV

Keep guests motivated and help them achieve their fitness goals with our 41 cm / 16" attachable viewing screen. We offer only the very best in screen technology, and our connection bracket fully integrates console controls and wiring for power and cable for a clean aesthetic.

*A complete*  
EXERCISE EXPERIENCE

*As the world's premier commercial fitness brand, Matrix offers a robust portfolio of cardio, strength and functional equipment, plus a connected ecosystem of technology and the industry's most sophisticated consoles. Whether you're looking for in-room solutions, designing an all-new fitness center or anything in-between, count on us for an integrated wellness experience that fits your space and gives your guests another reason to come back.*





# *A simply* SOPHISTICATED EXPERIENCE

*Our diverse collection of consoles gives you choices in what you put on your floor.*

*From our most sophisticated to our most streamlined, all Matrix consoles offer intuitive design that even your most technology-shy guests will find approachable and easy to use.*

*Mix and match different consoles with our Performance, Endurance and Lifestyle Series cardio equipment to find the combination of performance and technology right for your fitness center and your guests.*



TOUCH XL  
CONSOLE\*



TOUCH  
CONSOLE\*



PREMIUM LED  
CONSOLE



LED  
CONSOLE



## *An engaging* EXPERIENCE

*Our Touch Consoles exceed expectations with brilliant displays and fluid app interfaces.*

*Guests can connect to on-demand fitness, social media, streaming entertainment and much more.*

### EVER-EXPANDING APP SELECTION

Touch Consoles offer a premium selection of fitness-optimized apps for Netflix, Facebook, Twitter, YouTube, weather and more, plus our exclusive Sprint 8 program, Virtual Active and other great workouts.

### PREMIUM ENTERTAINMENT

Guests can enjoy must-see TV shows, cheer on friends through social media feeds, race through mountain trails and even connect via Bluetooth to access the personal playlists that keep them going strong.

### CUSTOMIZE TO BUILD YOUR BRAND

When used in conjunction with Asset Management, you can customize your home screens to reflect your brand, deliver your message and engage guests with your social media community.



## DEVICE CONNECTIVITY



### CONNECTS TO APPLE WATCH

Apple GymKit technology provides an easy, secure way for guests to connect their Apple Watch to cardio equipment and keep their metrics in sync.



### CONNECTS TO SAMSUNG GALAXY WATCH

Our integration with Samsung allows guests with Samsung Galaxy Watch devices (Galaxy Watch, Galaxy Watch Active, Galaxy Watch Active2) to seamlessly connect to Matrix equipment and view their heart rate data in real-time. At the end of the workout, data is synced and saved directly to your guest's Samsung Health account.



### BLUETOOTH & ANT+

Bluetooth connectivity and ANT+ compatibility lets guests connect to a wide range of personal devices including smartphones, wireless headphones, heart rate tracking devices and more. This means your guests can continue using their favorite Bluetooth-enabled training apps and never miss a workout during their stay with you.

## UNIQUE PROGRAMS



### VIRTUAL ACTIVE

Transform ordinary workouts into breathtaking journeys through exotic locales with our speed and terrain-interactive Virtual Active program.



### SPRINT 8

Sprint 8 goes beyond high-intensity interval training to give guests results they can see in the mirror. Our scientifically validated Sprint 8 program is effective, quick and simple.



### iFIT

When it comes to an inspiring, immersive exercise experience, nothing compares to Matrix cardio equipment featuring iFIT, a global leader in interactive connected fitness technology and content.



### LANDMARKS

Our Landmarks program turns Stepper and ClimbMill workouts into engaging, exhilarating journeys to the top of natural and man-made wonders of the world.

## *An exhilarating* EXPERIENCE

*Cardio training is the cornerstone of any sound fitness routine, but today's travelers expect a lot more than a good, hard run. We offer options that help guests work out the way they want to — whether that's running, rowing, riding or climbing — then enhance those basics with integrated technology that completely redefines exercise with exclusive training programs, premium entertainment and more. Everything we provide is as intuitive as it is dependable and stylish, so it's easy for guests to continue their regular exercise routine whenever and wherever they travel.*

*Choose the Performance Series for exclusive features and refined touch points, the Endurance Series for streamlined design without sacrificing performance and the Lifestyle Series for a simplified design with a smaller footprint.*





## *A stranger* EXPERIENCE

*All of our strength series offer something unique, and finding the right combination can help you provide the options right for your guest profile no matter what the size of your fitness center or budget. Choose from series that offer high-performance designs, endlessly reconfigurable options, premium styling, unmatched durability and much more, mixing and matching until your singular vision of fitness becomes a reality.*





#### INTELLIGENT TRAINING CONSOLE

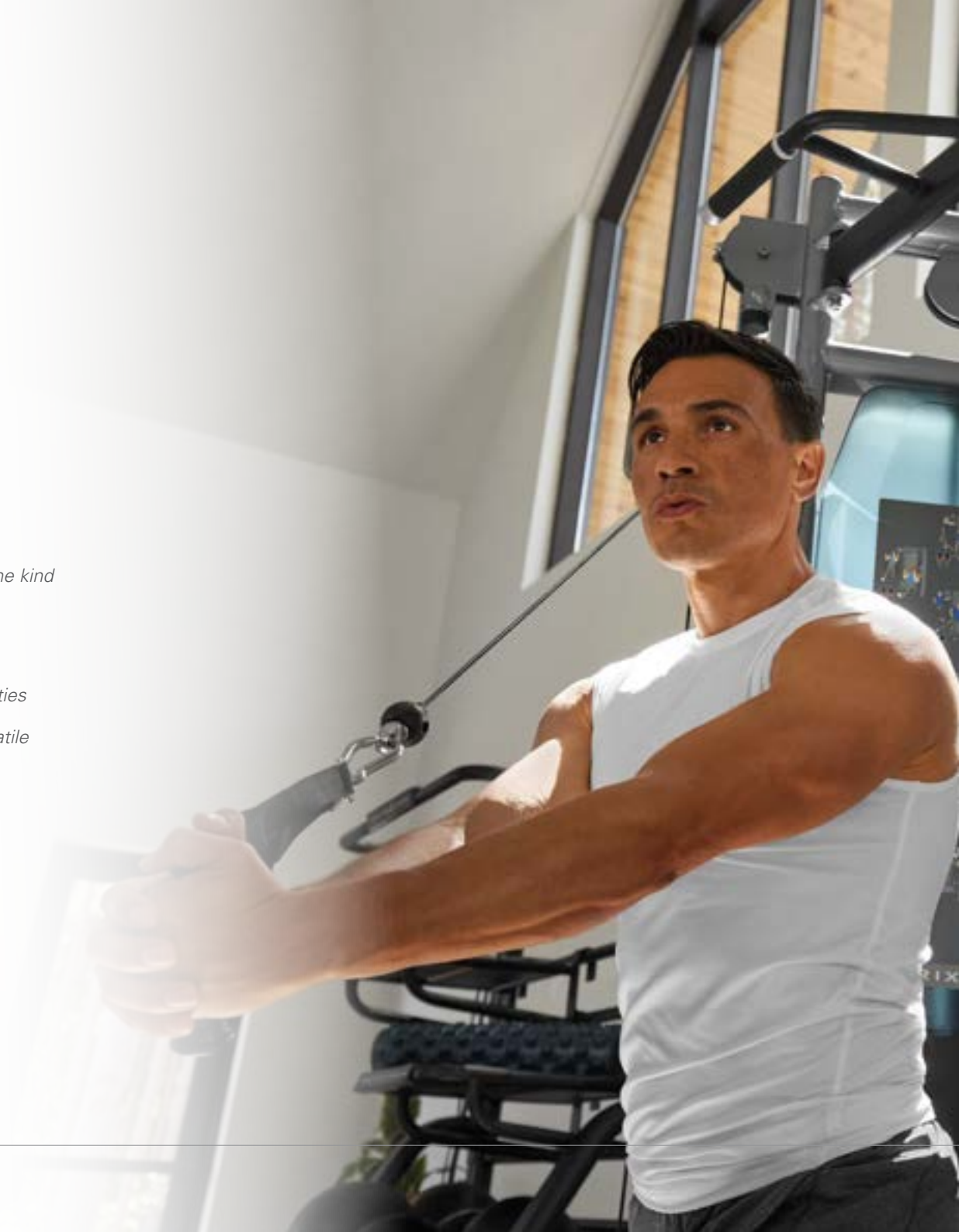
Ultra Series with Intelligent Training Console sets your fitness facility apart with a guided, fully connected strength training experience that is sure to motivate your guests.



*A flexible*  
FUNCTIONAL EXPERIENCE

*When it comes to functional training, our distinctive offering will give your guests the kind of dynamic exercise experience they'd expect to find in their favorite health club.*

*Choose from functional trainers that let multiple guests build strength for the activities of daily living or smaller smart solutions that transform underused spaces into versatile training stations, giving you flexible solutions for a functional experience.*





*Reinvent your fitness center as interest in functional training grows and more guests join this trend. The configurable designs of our Connexus Series offer virtually unlimited flexibility and expandability, making it easy to include functional training no matter the size. Create a space that sets your property apart by offering guests an opportunity to continue their training during their stay.*



CONNEXUS  
COMPACT



CONNEXUS  
COLUMN



CONNEXUS  
3-SHELF CART



CONNEXUS  
STEP+

## *A personal* EXPERIENCE

*In-room fitness has been gaining popularity with guests who want to continue their exercise routine in the comfort and privacy of their hotel room. So whether you want to create wellness-inspired rooms with a unique suite of fitness solutions or provide equipment on request, Matrix has solutions that are compact, engaging and versatile.*

*With our Virtual Training Cycle, guests can challenge themselves with Matrix-exclusive programming, or they can stay on track with their favorite instructor-led cycling classes. They can even stream the entertainment that keeps them moving, all on a cycle precision engineered for invigorating workouts.*

*To bring functional training to the in-room experience, look no further than our Connexus Series. Our space-efficient Connexus Column turns empty wall space into a versatile functional training station, while our use-anywhere Connexus Step+ lets users take on core, lower-body and cardio exercises right in their room.*

*Count on our in-room solutions to show guests your commitment to their wellbeing while exceeding their expectations every time they stay with you.*



## *A welcoming* EXPERIENCE

*Matrix is proud to have our equipment prominently featured in the finest hotels and resorts around the world. This is only a small selection of the fine establishments we partner with, a list that grows every day.*



### NANA GOLDEN BEACH CRETE, GREECE

Nana Golden Beach, a beautiful resort and spa situated on the shores of the Cretan Sea, offers its guests an extensive variety of sporting activities, wellness options and restaurants.



### LE MÉRIDIEN ABU DHABI, UNITED ARAB EMIRATES

Situated in the heart of Abu Dhabi, this five-star beach resort features a day-lit spa, a private beach, state-of-the-art fitness facility and six exceptional restaurants and lounges.



ANDAZ SINGAPORE  
SINGAPORE

This luxury hotel aims to spark a sense of discovery of the rich culture and heritage of the city of Singapore.



THE SAVOY  
LONDON, UNITED KINGDOM

A place where history and iconic elegance mingle with new-world sophistication, the Savoy stands proudly on the north bank of the River Thames.



ACTIVE BY LEITNER'S  
KAPRUN, AUSTRIA

On the outskirts of Kaprun, this modern and sporty retreat is embedded in the alpine landscape and is a holiday experience in a class of its own.



JW MARRIOTT  
GUADALAJARA, MEXICO

Located in Guadalajara, Jalisco, this luxury hotel offers easy access to a host of business offices, as well as shopping and entertainment options.

MATRIX AROUND THE WORLD

ALBANIA  
AUSTRALIA  
AUSTRIA  
BANGLADESH  
BELGIUM  
BRAZIL  
BULGARIA  
CAMBODIA  
CANADA  
CHINA  
CYPRUS  
CZECH REPUBLIC  
DENMARK  
FRANCE  
GERMANY  
GREECE  
HONG KONG  
INDIA  
INDONESIA  
ITALY  
JAPAN  
JORDAN

KOREA  
KUWAIT  
LAOS  
LUXEMBOURG  
MALAYSIA  
MALTA  
MEXICO  
MYANMAR  
NETHERLANDS  
NEW ZEALAND  
OMAN  
PHILIPPINES  
POLAND  
PORTUGAL  
QATAR  
ROMANIA  
RUSSIA

SAUDI ARABIA  
SLOVAKIA  
SOUTH AFRICA  
SPAIN  
SRI LANKA  
SWITZERLAND  
TAIWAN  
THAILAND  
TURKEY  
UNITED ARAB EMIRATES  
UNITED KINGDOM  
UNITED STATES  
VIETNAM

*A global* EXPERIENCE

*Matrix Fitness — a brand of Johnson Health Tech — is the industry's fastest-growing manufacturer and a favorite choice of the world's finest fitness centers. A truly global company with over 30 subsidiaries worldwide, we're well-positioned to serve clients in dense urban areas, on remote island getaways and everywhere in between with truly local sales, service and support.*



**MATRIX**  
Strong • Smart • Beautiful

**Matrix Fitness**

1600 Landmark Drive  
Cottage Grove, WI 53527 USA

**[matrixfitness.com](https://matrixfitness.com)**

©2023 Matrix Fitness. All Rights Reserved.

AUTHORIZED MATRIX FITNESS DISTRIBUTOR

